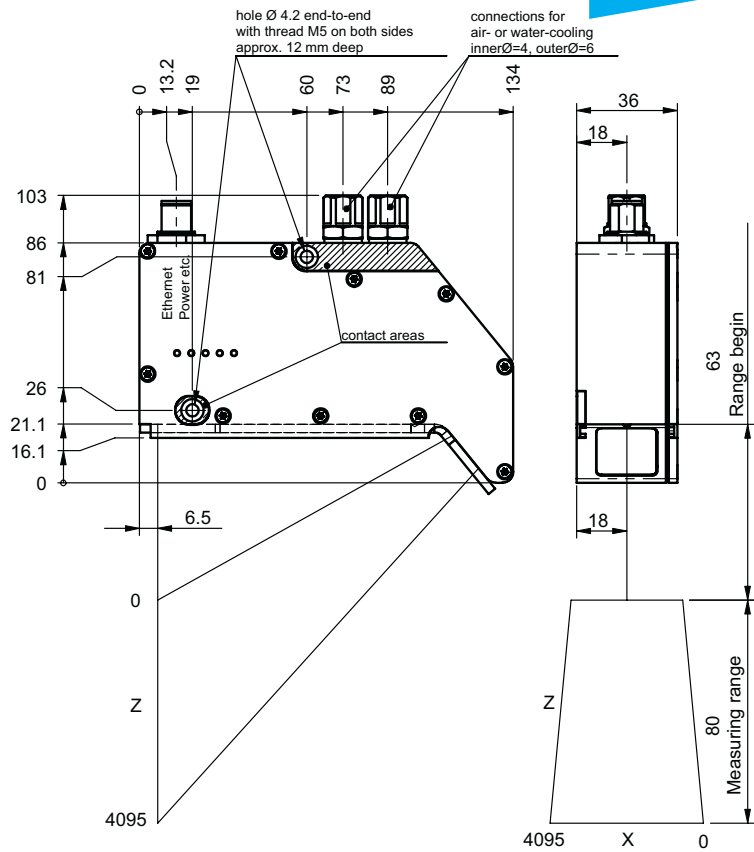


M2WS-iLAN LASER-Scanner

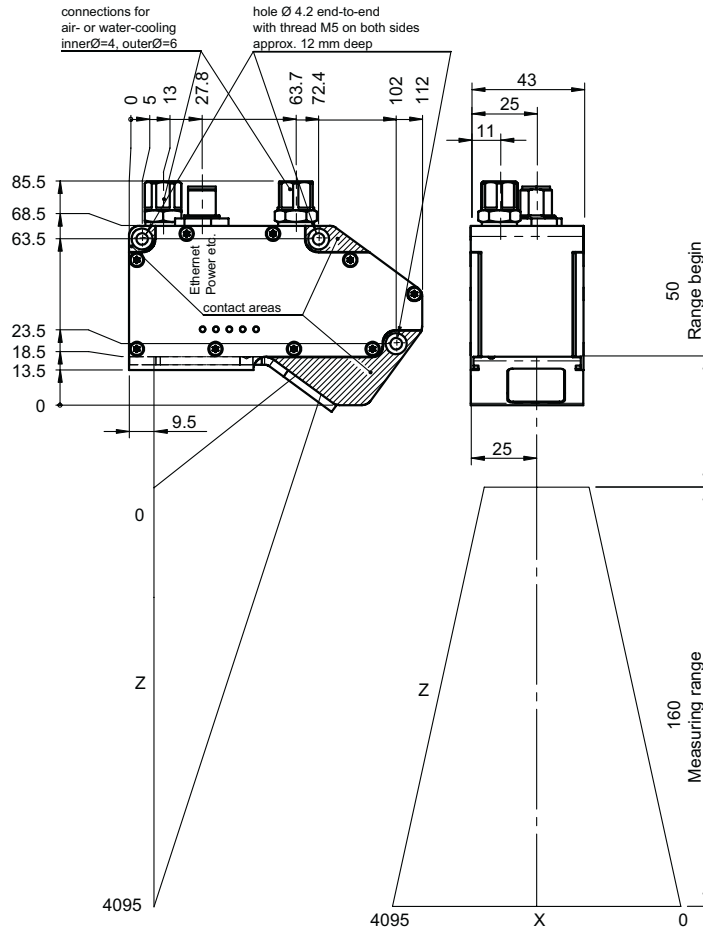
with integrated electronic system
and air- or water-cooling

- Measuring
- Controlling
- Monitoring

M2WS-iLAN 80/40



M2WS-iLAN 160/40



- no additional controller required
- for high temperature areas
- replaceable protective window

Technical Data M2WS-iLAN

M2WS-iLAN	80/40	160/40
Range Z [mm]	80	160
Begin of scan range X [mm]	40	40
End of scan range X [mm]	55	110
Range begin Z [mm]	63	50
Resolution Z [mm]	0.09	0.16
Resolution X [mm]	0.08	0.19

Linearity	0.2 % of measuring range
Laser protection class	2
Scan rate	100 Hz (27,000 meas. points / sec.)
Specials	feeler gage, elapsed hour counter, serial number and sensor data readable; connections for air- or water-cooling
Light source	Laser, wave length 658 nm, red visible
Ambient light	5,000 Lux
Operating time	Laser diode: 50,000 h
max. Vibration	5 g up to 1 kHz
Operating temperature	0° ... +40°C
Storage temperature	-20° ... +70°C
Humidity	< 90% RH
Protection class	IP 64
Power supply	8 - 30 V, Pw = 3 W
Measuring surface	white to black, shiny, high mirroring

Pin assignment:

connector M12, round, 12 pole, A-coded, male:

Pin	Signal
1	8 - 30 V DC supply
2	input 1
3	GND
4	input 2
5	Sync out
6	Sync in
7	TxD
8	RxD
9	Tx+
10	Rx+
11	Tx-
12	Rx-
shield	

Status-LEDs (housing cover)

LED	comment	colour
Power	Power OK	green
Eth-Link	Ethernet Link in operation	yellow
100 Mbit	Ethernet Link activity	orange
System	Hardware selftest OK	orange
FPGA	FPGA selftest OK	orange

Delivery:

- Sensor
- Mating connector (female)
M12, 12 pole
- Demo-Software
- Manual

Accessories:

- Protective window (glass)
- Protective window (plastics)