



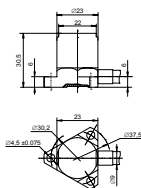
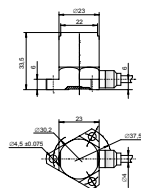


APTech industrial accelerometers are designed for vibration measurements under harsh environmental conditions. AP62 and AP63 have balanced outputs to increase noise immunity and providing high electrical insulation from the test-object. AP64 is a two-axial transducer for simultaneous measurement of radial and axial vibration components.

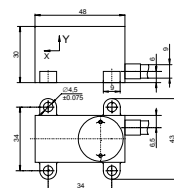
Industrial accelerometers		AP62	AP63	AP64	AP68
					
Parameter	Unit				
Charge sensitivity (+/- 10%)	pC/g	100	10	100	-
	pC/ms ²	10.2	1.02	10.2	-
Voltage sensitivity (+/- 10%)	mV/g	-	-	-	80
	mV/ms ²	-	-	-	8.16
Amplitude range	g rms	2000	5000	1500	60
Resolution	g rms	-	-	-	0.0003
Mechanical shock limit	g peak	5000	10,000	3000	500
Frequency range (+/- 1 dB)	Hz	2 to 7000	2 to 7000	2 to 3000	0.5 to 8000
Resonant frequency	kHz	>18	>18	>11	>25
Transverse sensitivity	%	<5	<5	<5	<5
Base strain sensitivity	g/μm	<0.01	<0.01	<0.01	<0.005
Temperature range	°C	-60 to +250	-60 to +400	-60 to +250	-40 to +125
Insulation resistance	MΩ	>1000	>1000	>1000	-
Capacitance	pF	4000 to 4800	1300 to 1700	4800 to 5500	-
Isolated base		Floating output	Floating output	No	No
Excitation voltage	Volt DC	-	-	-	+22 to +30
Constant current	mA	-	-	-	2 to 20
Output impedance	Ω	-	-	-	<500
Output bias voltage	Volt DC	-	-	-	+9 to +13
Settling time	second	-	-	-	3
Construction		Compression	Compression	Compression	Shear
Piezo material		ZTP26	THAB	ZTP26	ZTP19
Sensor connector		-	-	-	-
Integral cable length	meter	To be specified	To be specified	To be specified	2
Connecting cable		Metal armoured	Metal tube	Metal tube	-
Cable connector		To be specified	To be specified	To be specified	To be specified
Side/Top connection		Side	Side	Side	Side
Mounting method		3x M4.5	3x M4.5	4x M4.5	3x M4.5
Housing material		S.Steel	S.Steel	S.Steel	S.Steel
Weight without cable	gram	95	98	250	65
Notes		Permanent installation	Permanent installation	Two-axis for Radial and axial measurements	



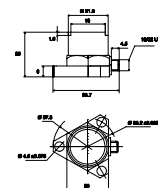
AP62



AP63



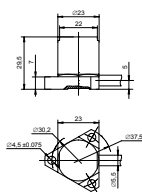
AP64



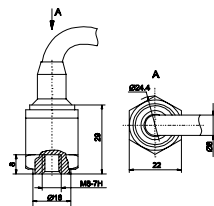
AP68

AP69, AP85 and AP91 are accelerometers with a balanced output allowing accurate measurements in situations where strong electromagnetic fields are present. AP91 is equipped with an industrial version output connector and a connection cable is delivered on order.

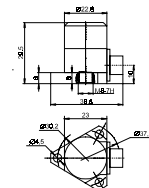
Industrial accelerometers		P69	AP85	AP91
Parameter	Unit			
Charge sensitivity (+/- 10%)	pC/g	100	-	-
	pC/ms ²	10.2	-	-
Voltage sensitivity (+/- 10%)	mV/g	-	100	30
	mV/ms ²	-	10.2	3.1
Amplitude range	g rms	2000	50	160
Resolution	g rms	-	0.0003	0.0001
Mechanical shock limit	g peak	5000	500	500
Frequency range (+/- 1 dB)	Hz	2 to 10,000	0.5 to 10,000	0.5 to 10,000
Resonant frequency	kHz	>18	>25	>35
Transverse sensitivity	%	<5	<5	<5
Base strain sensitivity	g/μm	<0.01	<0.0005	<0.01
Temperature range	°C	-60 to +250	-40 to +125	-40 to +125
Insulation resistance	MΩ	>1000	-	-
Capacitance	pF	4000	-	-
Isolated base		No	No	Yes
Excitation voltage	Volt DC	-	+22 to +30	+15 to +30
Constant current	mA	-	2 to 20	2 to 20
Output impedance	Ω	-	<500	<500
Output bias voltage	Volt DC	-	+9 to +13	+8 to +10
Settling time	second	-	3	5
Construction		Shear	Shear	Shear
Piezo material		ZTP26	ZTP19	ZTP19
Sensor connector		-	TNC	PC4
Integral cable length	meter	To be specified	-	-
Connecting cable		Metal tube	AK20	To be specified
Cable connector		To be specified	BNC	To be specified
Side/Top connection		Side	Top	Side
Mounting method		3x M4.5	M6	3x M4.5
Housing material		Titanium	S.Steel	Titanium
Weight without cable	gram	75	60	90
Notes		Permanent installation		



AP69



AP85



AP91