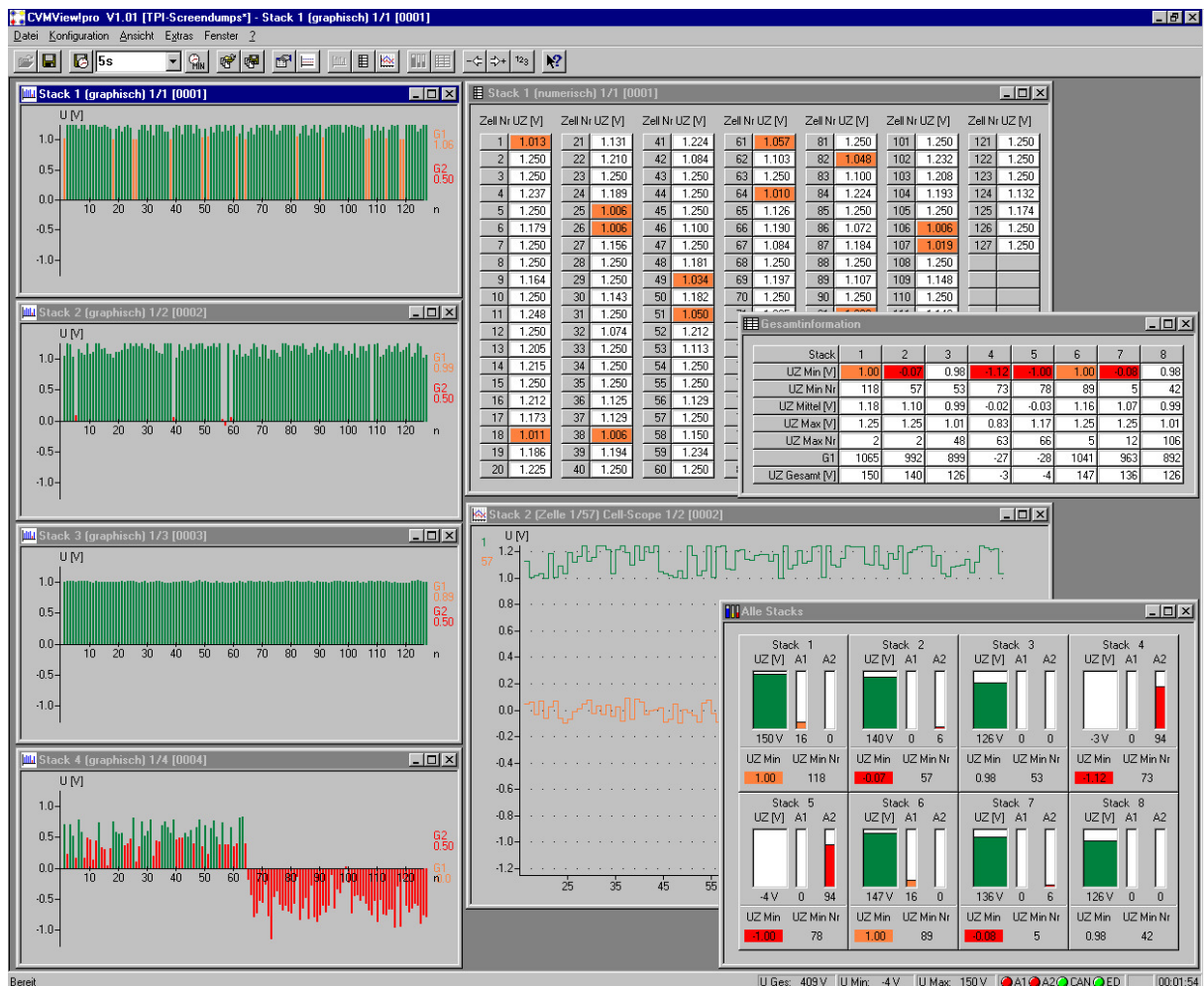


CVMView!pro – V2

Configuration and viewing software for the CVMS cell monitoring system

... Operating without Programming ...





Applications

The CVMView!pro software package is used to configure the Cell Voltage Monitoring System (CVMS) and also to display and process the measuring data.

This graphical user interface simplifies the work with the CVM System. Ergonomic user dialogues are available for all essential configuration and viewing options.

The measuring data display can be adapted to personal requirements. Convenient project management functions can be used to enable several users to work with several different stack systems.

Features

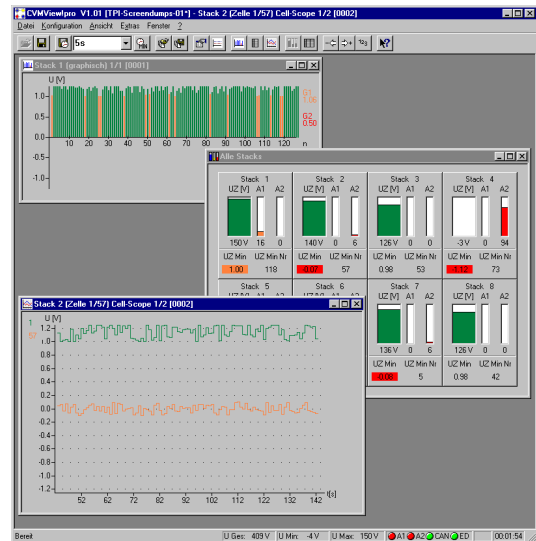
- Supports CAN-PC interface cards from:
 SMART: PCom-PCI, PCom-PCMCIA
 Systec: USB-CANmodul1
 National Instruments: CAN Series2
 Vektor Informatik: CANcardXL
- Simultaneous graphic and/or numeric display of up to 8x180 single measured values
- Simultaneous graphic and/or numeric display of all connected electronic measuring units in one system overview
- Simple system configuration through intelligent Busscan option. The system independently determines all active measuring units connected to the bus
- Allocation of the connected CVM units to the real system topology
- Data logger function for up to 4 freely selectable single cells per electronic measuring unit

Project management

- Project-specific loading and backing-up of all relevant interface settings
- Also possible to load limit values from the project file – this simplifies operation with laboratory systems without control unit

Back-up functions

- Back-up file in standard ASCII-format, simplifies further processing through MS-EXCEL etc.
- Automatic size limit of back-up file for long-term storage or extremely short back-up intervals
- Automatic name allocation on automatic back-up with file size limit – significantly reduces need for manual secondary processing



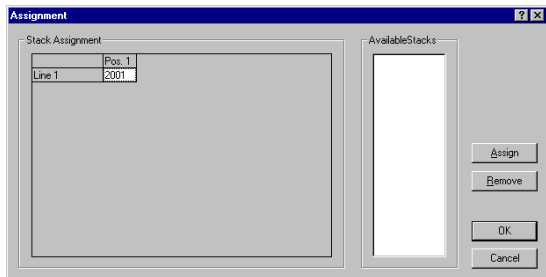
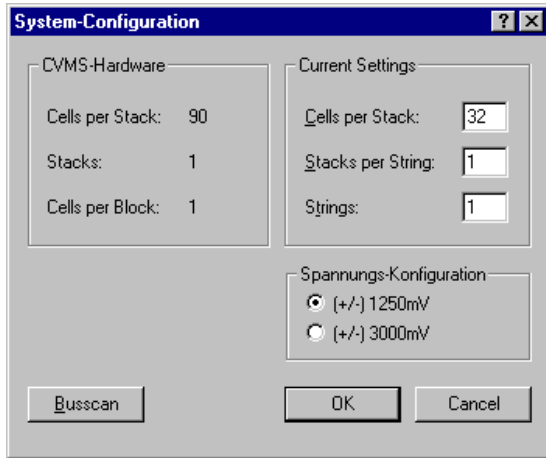
- Extensive back-up options: Single shot, interval back-ups with configurable interval periods etc.

Alarm processing

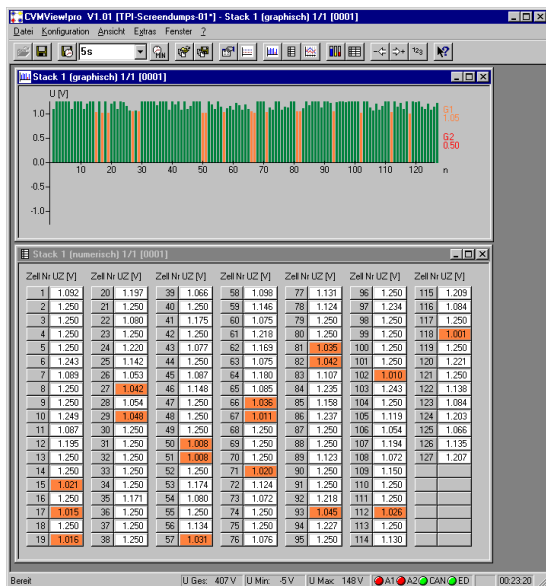
- Adjustable limit value for low absolute value (Alarm 2)
- Adjustable limit value for low average value (Alarm 1)
- Online monitoring of communication errors or bus access conflicts
- Status performance monitor for alive functions and limit value displays

Special functions

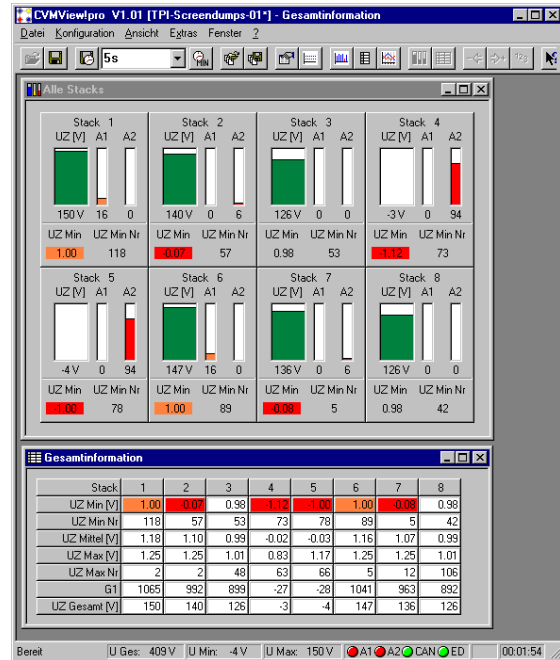
- Configurable colour settings for all display windows
- Side view and print function for all essential displays
- Comment input for each display window
- Freely scalable axes for single display
- Selective masking of single or group cells from alarm processing with temporary or permanent back-up facility.
- Simple configuration of expanded stack setting such as scan time, inversion of cell voltages, off-set etc.



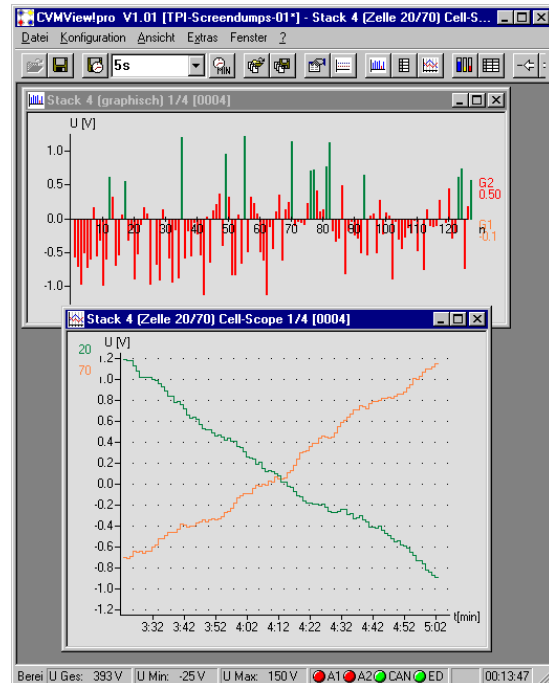
System configuration through intelligent Busscan option. The system independently determines all active electronic measuring units connected to the bus. The allocation between logical ID and physical position within the system is effected by clicking with the mouse.



Simple and complete overview of the current stack condition through single graphic and numeric single display. Colour display and size of display window can be extensively adjusted.



The condition of the entire system is analysed through the graphic or numeric system overview. All relevant information such as stack / overall system voltage, alarm information etc. can be seen at a glance.



Up to 4 critical voltages for one stack can be viewed over time and saved through the cell-scope data logger function. For all window types, comments can be entered and printed for documentation purposes.



Ordering information

Type	Order No.	Description
CVMLIB!pro-V2	30-18-0027	Windows DLL for configuration and communication with the cell voltage monitoring system CVMS. API for C/C++ and LabVIEW programs. Single user licence. Operates with Windows 2000/XP.
CVMView!pro-V2	30-18-0023	Graphical user interface for configuration and communication with the cell voltage monitoring system CVMS. Contains CVMLIB!prp-V2. Single user licence. Operates with Windows 2000/XP.

Each software contains:
 CD-ROM with software libraries, API description, test- and demo program.

Manufacturer

SMART Electronic Development GmbH
 Hölzelweg 2
 D-70191 Stuttgart

Tel +49 (0)711 / 25521-0
 Fax +49 (0)711 / 25521-10
 E-mail smart@smart-gmbh.de
 Internet www.smart-gmbh.de

Warranty

SMART Electronic Development GmbH provides a 2-year warranty for this unit calculated from the date of sale. During this period, all faulty components will be repaired or replaced free of charge. If necessary, the unit will be replaced by an alternative equivalent unit. SMART Electronic Development GmbH shall be solely responsible for deciding how the specified operability is to be restored. The warranty covers neither damage caused by improper operation or use nor spare parts. Unauthorised intervention by the customer or by third parties shall render the warranty invalid. In the event of a repair, the product must be returned in its original packaging or in equipment packaging suitable for the specified method of transport. SMART Electronic Development GmbH cannot accept responsibility for transport damage.

Template: TED-TPIHW-A4H.dot
 CVMView!pro_TPI_V201e.doc
 3rd Edition June 2007 - WS
 Printed August 07