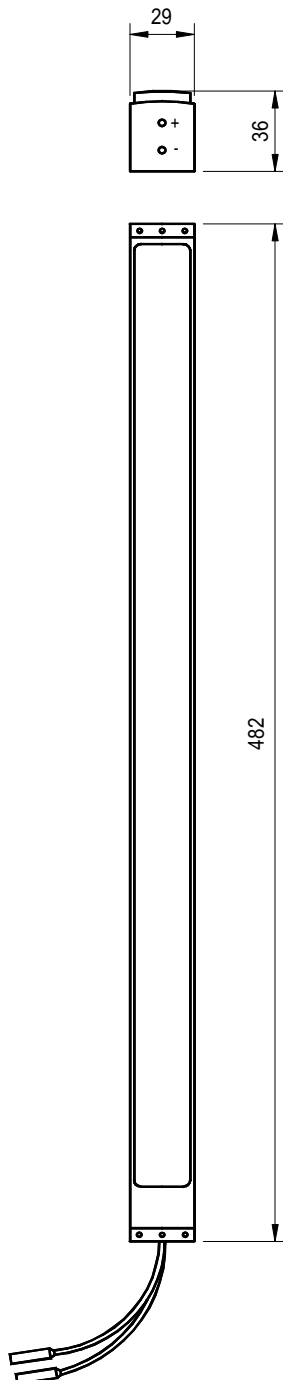
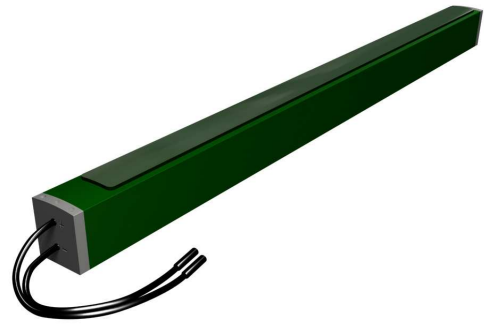


- KLEIN TOW FISH TRANSDUCER
- 422 DIRECT EQUIVALENT
- IMPROVED PERFORMANCE
- DEEP WATER OPTION
- LOW COST



**REPLACEMENT TRANSDUCER FOR  
KLEIN 422 SERIES TOWFISH**

The T63 and T64 transducers are highly directional side scan arrays designed to be exact replacement units for the Klein 422 range of towfish.

Two single frequency versions are available, the T63 high frequency and the T64 low frequency.

The company's extensive transducer expertise has created products that are available at a substantially lower cost and in many respects out perform the original.

A deep-water version, capable of operating down to 2000 metres is available to special order.

**This product is stocked by our  
world-wide distributor**

**GSE Rentals Ltd, Aberdeen**  
**Tel: +44 (0) 1224 771247**  
**Fax: +44 (0) 1224 723116**  
**E Mail: [info@gserentals.co.uk](mailto:info@gserentals.co.uk)**

All dimensions in mm

# MODEL T63 & T64

## SideScan Transducers

### Technical Specification

Klein Associates	4225-101EF (Low Frequency)	4225-101AF (High Frequency)	Tow Fish Type
Neptune Sonar	T64	T63	Type Number
*Frequency	100	500	kHz
Horizontal Beam (-3dB)	1.0	0.3	Degrees
Vertical Beam (-3dB)	40	40	Degrees
*Source Level	228	220	dB re uPa @ 1m
*When included as part of the 422 Tow Fish System			
Depth Rating	600 Metres		
(Optional) Depth Rating	2000 Metres		
Connection Type	2 x Single Socket Free Connectors		
Storage Temperature	-40 to +80 °C		
Operating Temperature	-5 to +70 °C		

Data illustrated is taken from actual in-water measurements