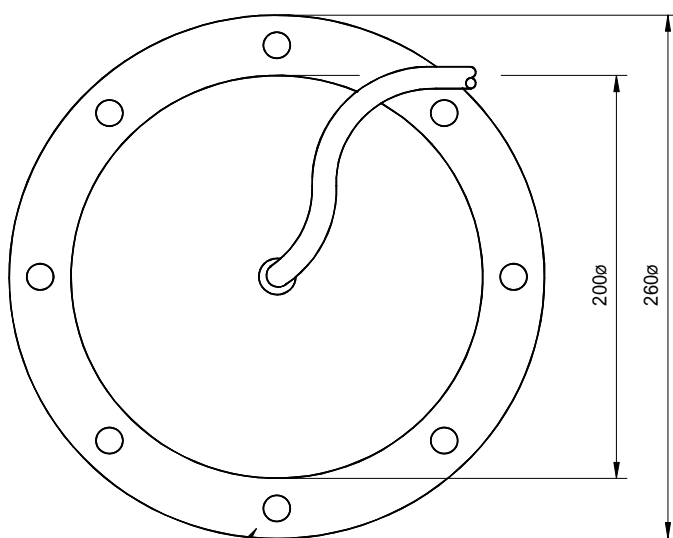
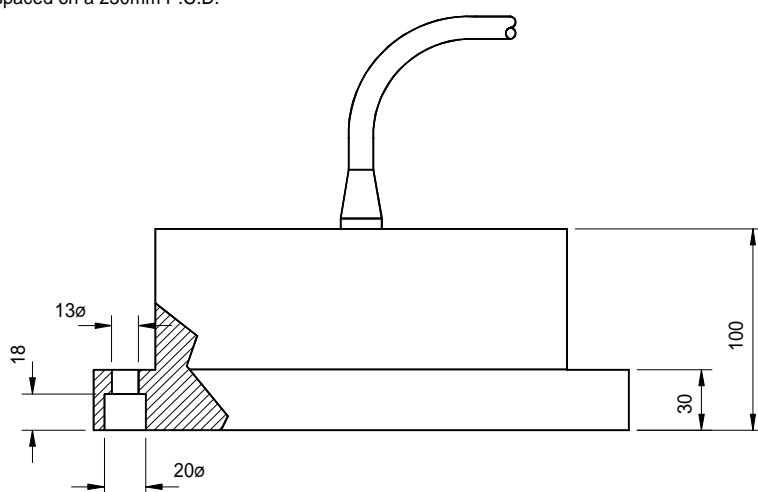


- 120 KHZ DUAL BEAM
- NAVIGATION : FISHING : SURVEYING
- HIGH PERFORMANCE
- SCIENTIFIC ECHO SOUNDING
- HULL OR TOWED BODY
- ROBUST NYLON HOUSING



Mounting holes equally spaced on a 230mm P.C.D.



All dimensions in mm

The Type T38 is a precision echo sounder transducer designed for use in hydrographic or scientific applications where an accurately defined, narrow beam pattern is required.

Operating at 120 kHz the multi-element array is configured to achieve two, highly directional, conical beam patterns with low side lobe levels.

A four core cable moulded into the rear of the transducer enables the beams to be switched between wide and narrow patterns using a remote selection box.

Originally designed for hull mounting, the tough nylon body is pressure rated down to 250 metres making it suitable for towed body installation.

A single beam version of this transducer has recently been introduced to provide the same performance as the narrow beam configuration but with a lower side-lobe level.

MODEL T38

Dual Beam Transducers

Technical Specification

Frequency	120		kHz
Beam Width	Wide	Narrow	Selectable
Beam Angle (-3dB)	16.5	10.5	Degrees Conical
Transmit Sensitivity	172	176	dB re uPa/V @ 1m
Receive Sensitivity	-187	-187	dB re V/uPa
Bandwidth	8	8	kHz
Max Input Power	1600	3000	Watts Pulsed
Operating Depth	250	250	Metres
Input Impedance	50	50	Ohms
Transducer impedance can be adjusted to suit customers specification			
Cable Length	10 Metres Standard (Additional lengths supplied to order)		
Cable Type	Polyurethane Ø12mm 4 Core Screened		
Storage Temperature	-40 to +80 °C		
Operating Temperature	-5 to +70 °C		

Data illustrated is taken from actual in-water measurements