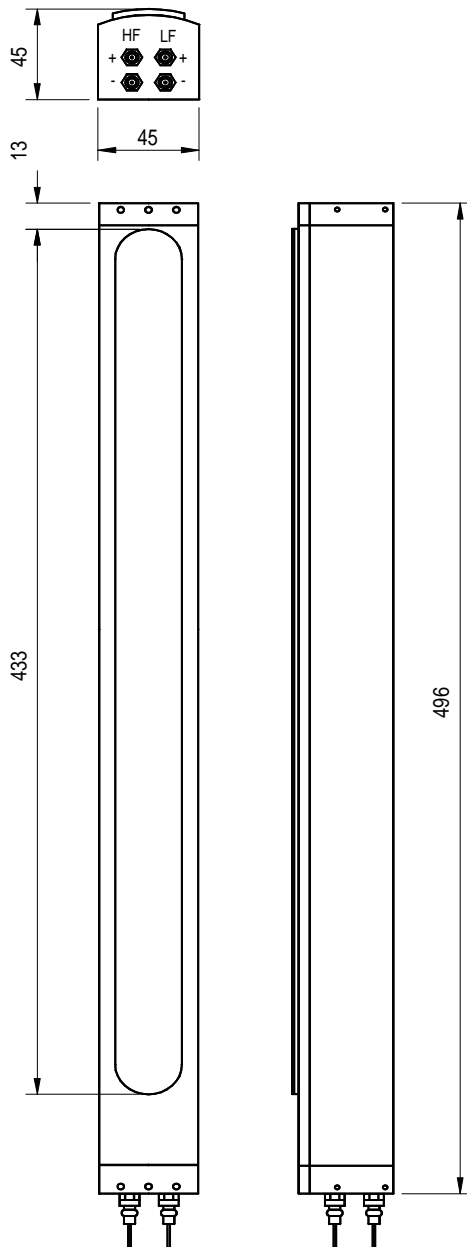
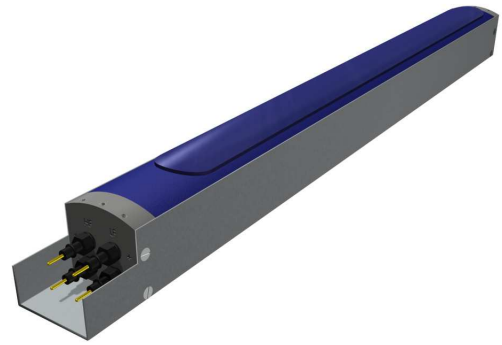


- 272 TOWFISH TRANSDUCERS
- EG&G / EDGETECH EQUIVALENTS
- ENHANCED PERFORMANCE
- REPLACEABLE CONNECTORS
- T36 - DUAL FREQUENCY
- T6I - SINGLE FREQUENCY



### REPLACEMENT TRANSDUCERS FOR EdgeTech 272 TOWFISH

The Type T36 & T6I transducers are highly directional sidescan arrays designed to be exact replacement units for the EG&G / EdgeTech range of 272 towfish.

The T36 design out-performs the original manufacturer's unit at a substantially lower cost.

A unique feature with the Neptune design is the ability to replace any of the four single pin connectors. This can be carried out in the field by the operator.

A deep-water version of this transducer, capable of operating down to 2000 metres is available to special order.

This product is stocked by our  
world-wide distributor

**GSE Rentals Ltd, Aberdeen**

**Tel: +44 (0) 1224 771247**

**Fax: +44 (0) 1224 723116**

**E Mail: [info@gserentals.co.uk](mailto:info@gserentals.co.uk)**

All dimensions in mm

# MODEL T36 & T6I

## SideScan Transducers

### Technical Specification

EG&G / EdgeTech	272 & 272 T (Dual Beam)		272 TD (Dual Frequency)		Type Number
Neptune Sonar	T6I		T36		Type Number
*Frequency	105	105	105	500	kHz
Horizontal Beam (-3dB)	1.2	1.2	1.2	0.5	Degrees
Vertical Beam (-3dB)	20	50	50	50	Degrees
*Source Level	229	234	229	223	dB re uPa @ 1m
*When included as part of the 272 Tow Fish System					
Standard Depth Rating	600 Metres				
(Optional) Depth Rating	2000 Metres				
Connection Type	4 Single Pins "Replaceable in-field"				
Storage Temperature	-40 to +80 °C				
Operating Temperature	-5 to +70 °C				

Data illustrated is taken from actual in-water measurements