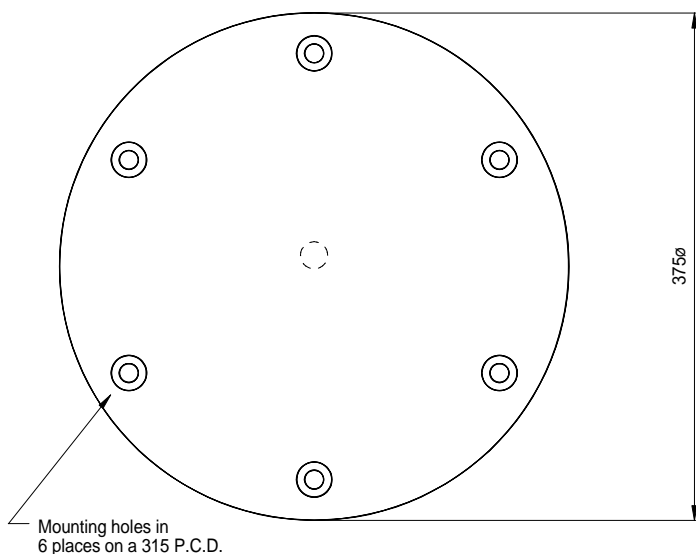


- 12 KHZ TRANSDUCER
- SINGLE NARROW BEAM
- LOW SIDE LOBE
- LONG RANGE ECHO SOUNDING
- TOWED BODY CAPABILITY
- NEPCAST® PU MOULDED HOUSING



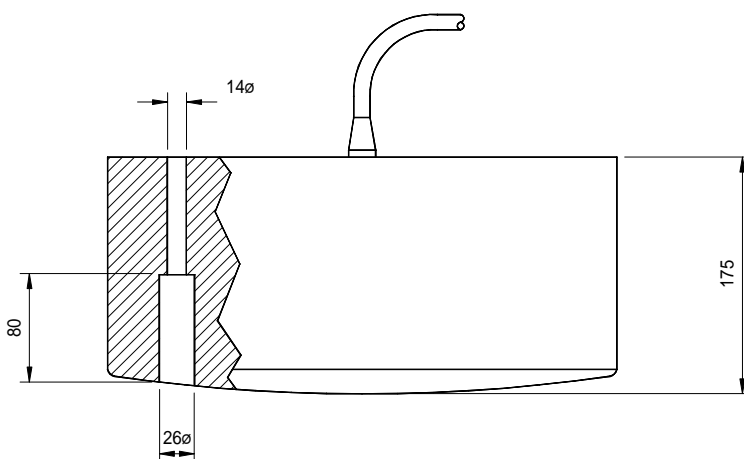
The TI98 transducer is a high power, long range directional array operating at 12 kHz. Originally designed for over-side installation, the TI98 can also be hull mounted.

The nodal mounted elements are extremely robust, capable of withstanding high slamming forces, highly efficient and provide an excellent front to back ratio.

An external transformer can be supplied to accommodate any impedance matching.

The transducer housing is based upon the NEPTCAST® system, producing a "one piece" all moulded, robust, lightweight and corrosion free transducer body.

Other applications include deep water echo sounding, using a towed body down to depths of 500 metres.



All dimensions in mm

**This product is stocked by our world-wide distributor**

**GSE Rentals Ltd, Aberdeen**

**Tel: +44 (0) 1224 771247**

**Fax: +44 (0) 1224 723116**

**E Mail: [info@gserentals.co.uk](mailto:info@gserentals.co.uk)**

**Technical Specification**

Frequency	12 kHz
Bandwidth	1.5 kHz
Beam Angle (-3dB)	20 Degrees Conical
Side Lobe Level	> -20dB
Front / Back Ratio	> -24dB
Impedance at Resonance	110 Ohms Real
Transmit Sensitivity	167 dB ref uPa/V at 1m
Receive Sensitivity	-173 dB ref V/uPa
Input Power Max	5000 Watts pulsed
Operating Depth	600 Metres
(Optional) Operating Depth	1500 Metres
Cable Length	10 Metres Standard (Additional lengths supplied to order)
Cable Type	Polyurethane Ø12mm 2 Core Screened
Storage Temperature	-40 to +80 °C
Operating Temperature	-5 to +70 °C

Data illustrated is taken from actual in-water measurements