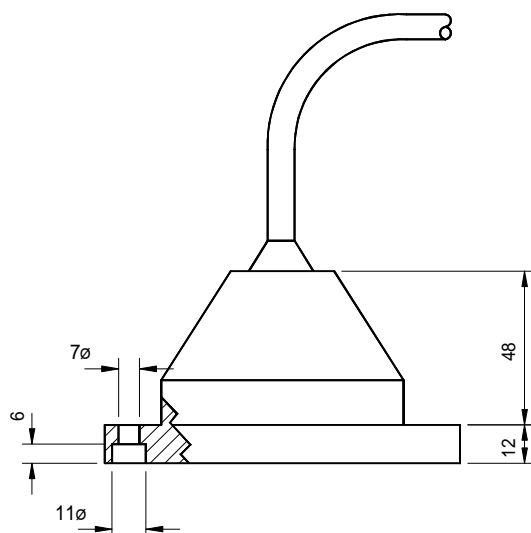
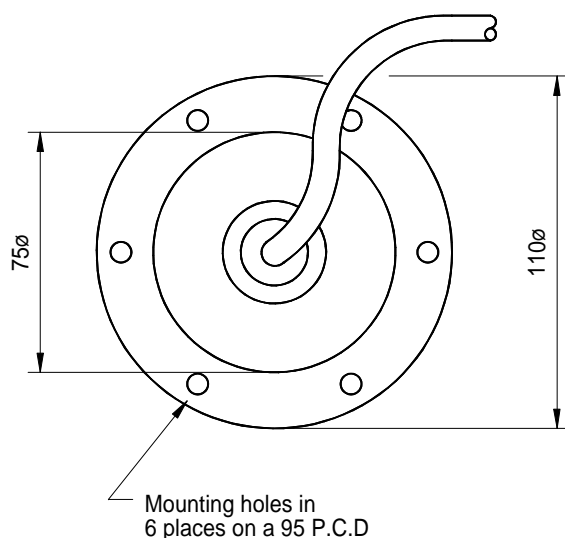


- ATLAS SW6014 EQUIVALENT
- 5 FREQUENCY OPTIONS
- FISHING : NAVIGATION : SURVEYING
- HULL OR OVER-SIDE MOUNTING
- NEPTCAST® PU MOULDED HOUSING



All dimensions in mm

Available in a choice of five different frequencies, the 390 SERIES transducer is intended for vertical depth sounding applications.

The frequencies selected for the 390 SERIES are compatible with a wide range of echo-sounder types, in particular the 210 kHz version is an exact equivalent for the Atlas SW 6014.

The 390 SERIES are manufactured using the latest NEPTCAST® polyurethane moulding system. This technique provides a mechanically robust, corrosion free transducer, suitable for tank, thru-hull or over-side mounting.

This product is stocked by our world-wide distributor

GSE Rentals Ltd, Aberdeen

Tel: +44 (0) 1224 771247

Fax: +44 (0) 1224 723116

E Mail: info@gserentals.co.uk

MODEL 390 SERIES

Single Beam Transducers

Technical Specification

Frequency Options	160	200	210	300	600	kHz
Beam Angle (-3dB)	12	8	7.5	7	5	Degrees Conical
Transmit Sensitivity	175	175	174	172	174	dB re uPa/V @ 1m
Receive Sensitivity	-187	-186	-187	-174	-204	dB re V/uPa
Input Power	300	300	300	300	300	Watts
Bandwidth	14	20	28	28	57	kHz
Nominal Impedance	70	70	100	75	75	Ohms

Transducer impedance can be adjusted to suit customers specification

Cable Length	10 Metres Standard (Additional lengths supplied to order)
Cable Type	Polyurethane Ø9mm 2 Core Screened
Storage Temperature	-40 to +80 °C
Operating Temperature	-5 to +70 °C

Data illustrated is taken from actual in-water measurements